




Dow

®



DOWSIL™

silicones by 



DOW



DOWSIL™ Glass Sealant

DOWSIL™ Glass Sealant is a fast curing, high-performance, acetic cure 100% silicone sealant. It is designed for exceptional glass adhesion and sealing.

Product Features & Benefits:

- One-part room temperature cured silicone sealant
- 100% silicone sealant
- Good adhesion to glass and ceramic substrates

Applications:

- Glass cabinet and glass shop-window adhesion and sealing
- Window and door glass, indoor and outdoor glass breaking adhesion and sealing Glass and ceramic material adhesion and sealing

Product Properties:

- Fast cure, cure-in-depth is more than 2 mm after 24 hrs
- Keep flexibility at -40°C to 150°C after cured

Available Colors: Black, White, Grey, Aluminum, Bronze, Clear





DOW



DOWSIL™ Sanitary & Tile Silicone Sealant

A high performance neutral cure silicone sealant designed to resist the growth of mold and mildew where conditions of high humidity and temperature exist.

Product Features & Benefits:

- Contains fungicides to inhibit growth of mould and mildew
- Easy to use/ease of application compared to non-silicone materials
- Good/excellent unprimed adhesion to most common substrates

Applications:

It is an excellent choice for use in around bathrooms, laundry sinks, ceramic tiles, vitreous china enamel painted surfaces, etc.

Product Properties:

- Cures at room temperature to a tough, flexible rubber
- Stable and flexible from -40°C to +150°C

Available Colors: Translucent, White, Ivory





DOW[®]



DOWSIL™ GP Silicone Sealant

DOWSIL™ GP Silicone Sealant is a cost-effective, general purpose acetic cure sealant. It offers long-term durability in a range of general sealing and glazing applications.

Product Features & Benefits:

- Cures to 100% silicone rubber
- Resistant to sunlight and weather extremes
- Fast cure, high strength
- Remains flexible; will not become brittle, crack, shrink or chalk
- Bonds to many common substrates
- Supplied is removable, reusable, resealable nozzle that saves time and sealant

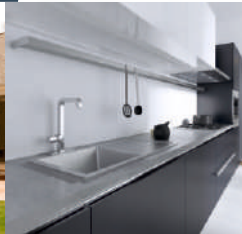
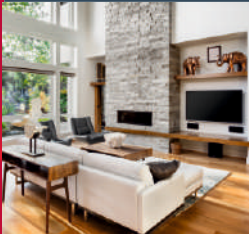
Applications:

- As a bedding material, formed-in-place gasket, formed-in-place bumper
- Adhering trim, name plates, signs
- Sealing around sinks, faucets, showers, tubs, toilets and vents
- For most marine applications: sealing between hull and deck, most boat decks, windows, port lights, windshields and hatches

Product Properties:

- Good tensile strength
- Application temperature range is -29° c to 50° c

Available Colors: Clear, White, Black





DOW



DOWSIL™ Neutral Plus Silicone Sealant

DOWSIL™ Neutral Plus Silicone Sealant is a cost-effective, multi-purpose, neutral cure sealant. It offers long-term durability in a range of general sealing and glazing, waterproofing and trade applications.

Product Features & Benefits:

- One-part room temperature cured silicone sealant
- Good adhesion to various construction substrates, such as glass, anodized aluminum, GMS steel, ceramic, and some surface treated materials

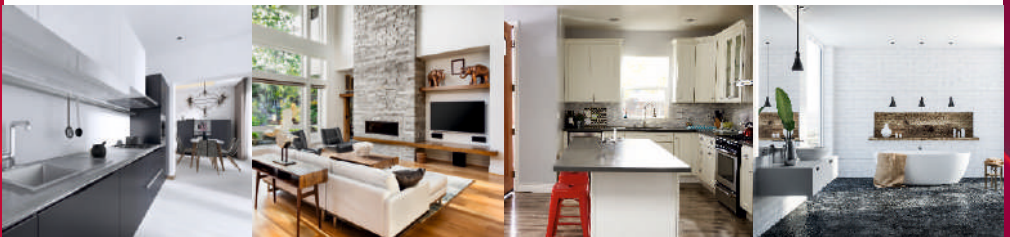
Applications:

- General-purpose residential sealing and filling applications
- Glazing and sealing of residential windows and doors
- Filling, sealing of residential decorative items
- Filling of frames, and floor-filling

Product Properties:

- One-part room temperature cured silicone sealant
- Keeps flexibility at -40°C to 150°C after cured

Available Colors: White, Black, Grey, Translucent





DOW[®]



DOWSIL™ 789 Silicone Weather Proofing Sealant

DOWSIL 789 Silicone Weatherproofing Sealant is a one-part, neutral- cure, architectural grade sealant. It easily extrudes in any weather and cures at ambient temperature by reaction with moisture in the air to form a durable, flexible silicone rubber seal.

Product Features & Benefits:

- Easy to extrude in any weather and cures at ambient temperature by moisture in the air.
- Ease of application and ready to use as supplied
- Primerless adhesion - upon curing will form a strong bond to most common building components without the use of a primer

Applications:

DOWSIL™ 789 Silicone Weatherproofing Sealant is a weather sealing product specifically designed for general glazing and weather sealing in curtain walls and building facades.

Product Properties:

- Long-life reliability – cured sealant stays elastomeric from -50°C to 150°C without hardening, cracking or becoming brittle under normal weather conditions
- Low Modulus – with extension/compression capability up to ±50% of original joint width
- Typical working time 15 to 30 minutes
- In general, Sealant requires curing time of 7-14 days

Available Colors: Black, Clear, Dark Grey, Bronze, Limestone, Precast White and White





DOWSIL™ 688 Glazing and Cladding Sealant

DOWSIL™ 688 Glazing and Cladding Sealant is a one-part neutral cure, the construction-grade sealant that easily extrudes in any weather. It quickly cures at room temperature by reaction with moisture in the air to form a durable, flexible silicone rubber seal.

Product Features & Benefits:

- Adheres to a wide range of building materials and finishes
- Neutral cure; will not corrode galvanized/zinc-coated steel or attack concrete
- Excellent resistance to weathering, ultra-violet radiation, vibration, moisture, ozone, temperature extremes, airborne pollutants, cleaning detergents and many solvents
- Strong elastic seal capable of withstanding movements up to $\pm 25\%$ of original joint width
- Good weatherability – it is virtually unaffected by sunlight, rain, snow, ozone or temperature extremes
- Bonds to most common construction materials without use of primer

Applications:

DOWSIL™ 688 Glazing and Cladding Sealant is designed for a wide range of glazing, weather sealing and professional caulking applications. It bonds to form a strong weatherproof seal on most common building materials.

Product Properties:

- Excellent unprimed adhesion to most construction materials
- Temperature stability is between -20 to 120 °C
- In general, sealant requires curing time of 7-14 days.

Available Colors: Black, Grey, White and Translucent



**DOW**[®]

DOWSIL™ 795 Structural Glazing Sealant

DOWSIL™ 795 Structural Glazing Sealant is a one-part, neutral-cure, architectural-grade sealant that easily extrudes over a wide temperature range. This cold-applied, non-sagging silicone material cures to a medium- modulus rubber upon exposure to atmospheric moisture. The cured sealant is durable and flexible enough to accommodate $\pm 50\%$ movement of original joint dimension when installed in a properly designed weatherseal joint. In a properly designed structurally glazed joint, the sealant is strong enough to support glass and other panel materials under high wind-load and seismic effects.

Product Features & Benefits:

- Excellent adhesion to a wide range of substrates including glass, anodized and coated aluminum profiles
- Ease of use-all-temperature gunnability and easy tooling
- The cured product exhibits excellent weathering characteristics, and a high resistance to ultra-violet radiation, heat and humidity
- High ultimate tensile strength which makes it suitable for structural bonding applications

Applications:

DOWSIL™ 795 Structural Glazing Sealant is designed for structural and nonstructural glazing structural. Weather sealing of most common construction materials including glass, aluminum, steel, painted metal, EIFS, granite and other stone, concrete, brick and plastics

Product Properties:

- Excellent weather ability virtually unaffected by sunlight, rain, snow, ozone and temperature extremes of -40°C to 149°C
- Excellent unprimed adhesion to a wide variety of construction materials and building components, including anodized, alodined, most coated and many Kynar painted aluminums

Available Colors: Black, White, Grey and Bronze





DOWSIL™ 995 Silicone Structural Sealant

DOWSIL™ 995 Silicone Structural Sealant is a one-part neutral-curing silicone sealant designed specifically for structural bonding applications of glass and metal in factory or field situations.

Product Features & Benefits:

- Odorless, non-corrosive cure system
- Cures to form an extremely tough elastomeric rubber ensuring a durable, flexible, watertight bond
- Excellent weatherability and high resistance to ultraviolet radiation, heat and humidity, ozone and temperature extremes
- Excellent unprimed adhesion to wide range of substrates including coated, enameled, and reflective glasses; anodized and polyester coated or painted aluminum profiles including most fluoropolymer-based paints such as Kynar

Applications:

DOWSIL™ 995 Silicone Structural Sealant is designed specifically for structural bonding and protective glazing applications

Product Properties:

- High ultimate tensile strength
- In general, sealant requires curing time of 7-14 days.
- Superior unprimed adhesion for structural glazing applications for hurricane or impact rated windows and doors.
- It has a movement capability of +/- 50%.
- Excellent mechanical properties

Available Colors: Black, Gray, White





DOWSIL™ 817 Mirror Adhesive

DOWSIL™ 817 Mirror Adhesive is a one-part silicone sealant for internal fixation of mirrors, coated glass or metal panels onto various substrates and for bonding of glass and backplate in solar thermal panels.

Product Features & Benefits:

- Non-corrosive, odorless, ready to use gun grade sealant which reacts with air moisture
- Excellent unprimed adhesion on most glasses, metals and mirror coatings
- Outstanding resistance to heat and humidity
- Resistant to ozone, ultra-violet radiation and temperature extremes

Applications:

It is non-corrosive with excellent adhesion to a range of mirror backings, glasses (coated and reflective), metals, plastics, polycarbonate and PVC-U.

Product Properties:

- Application temperature range is +5 ° c to + 40 ° c
- High modulus neutral silicone sealant

Available Colors: White





DOW



DOWSIL™ 896 PanelFix

DOWSIL™ 896 PanelFix is a one-part, neutral curing alkoxy silicone sealant specifically designed for non-glass facade applications to structurally bond two substrates together. It provides immediate strength directly after application. DOWSIL™ 896 PanelFix is a silicone which shows primerless adhesion to a variety of substrates and provides high strength once fully cured.

Product Features & Benefits:

- High strength silicone sealant
- One-part moisture curing
- UV- and weather-resistant
- Primerless adhesion to a wide range of substrates
- Neutral cure
- Low odor
- Elastic bonding silicone
- Fast & easy panel bonding
- Safe assembly due to fast strength build up
- High longevity
- Factory bonding and on-site application
- Compatible & approved package: silicone & tape

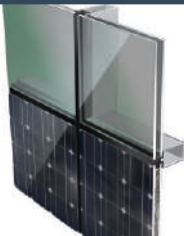
Applications:

DOWSIL™ 896 PanelFix is a sealant specifically designed for panel bonding applications that require high durability and fast handling.

Product Properties:

- Low squeeze out
- Temperature stability is up to 150°C
- No creep under high temperature

Available Colors: White





DOWSIL™ 1000 Doors & Windows Silicone Sealant

Product Features & Benefits:

- One-Part
- Neutral-Cure
- UV Resistant
- Durable and long lasting
- Strong weather resistant seal
- Adhesion to uPVC and cementitious substrates

Applications:

- DOWSIL™ 1000 Doors & Windows Silicone Sealant is a high-performance neutral cure silicone sealant that can be widely used for sealing
- Low shrinkage
- Ease of application – ready to use as supplied
- Non sag; can be applied to vertical and overhead surfaces
- Perimeter sealing of gaps around doors, window frames and masonry.
- uPVC and the alkaline substrates like cement based plastered unprimed substrates.

Product Properties:

- Excellent tack free time for better tooling capability
- Temperature stability is between 40 to 150°C
- In general, sealant requires curing time of 7-14 days

Available Colors: White



Six steps to sure sealing

DOW
®

1. Clean and prepare the surface



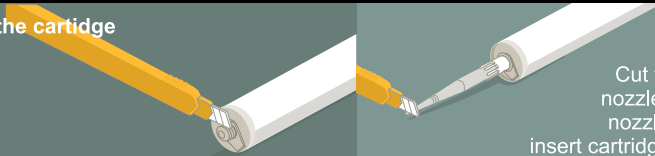
Surface must be clean, dry, and free from dirt, grease, and old sealant.

2. Masking



For a neat appearance and reducing clean up.

3. Prepare the cartridge



Cut tip of cartridge, cut nozzle at 45 degree, put nozzle on the cartridge, insert cartridge in cartridge gun.

4. Apply sealant



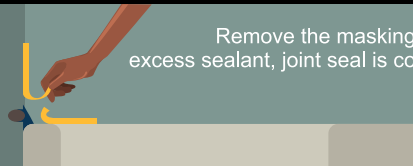
Insert backing material (e.g. backer rod), apply sealant to fill the joint.

5. Smooth the joint



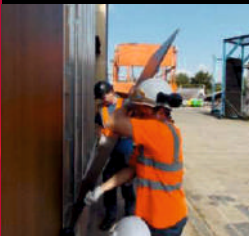
Tool/smooth the joint immediately using a spatula.

6. Finish



Remove the masking and any excess sealant, joint seal is completed!

Please refer to Product Technical Data Sheet, available for download at dow.com for more technical information.





Limitation

If you need advanced sealant used for curtain wall construction, please contact your local Dow representative. This product is not suitable for the following purposes:

- Curtain wall glazing
- Structural glazing
- Continuous water immersion
- Materials that bleed plasticizers or solvents or release by-products that may inhibit its cure, affect adhesion or discolour the sealant
- Unventilated places this product is neither tested nor represented as suitable for medical or pharmaceutical uses.

Contact Us

Dow has sales office, manufacturing sites and science and technology laboratories around the globe. Find contact information at dow.com/contactus.

Images: dow_91893670, dow_74480563, dow_267989639, dow_58166903459, dow_65250023333, dow_72630877602, dow_55553504625, dow_40252842256, dow_91893670, dow_237972721, dow_232820400, dow_91893670, dow_232820400, dow_40252842256, dow_224070757, dow_71864653148, dow_68691070628, dow_60012385782, dow_72630882763, dow_267989493, dow_281849706, dow_267989493, dow_297115530, dow_55069537907, dow_267989493, dow_60012385782, dow_61864527258, dow_55069537907, dow_84326738, dow_122805258, dow_237972721, dow_109900979, dow_91916201, dow_72471200265, dow_60377541296, dow_51939962, dow_233818681

PRODUCT SAFETY INFORMATION REQUIRED FOR SAFE USE IS NOT INCLUDED IN THIS DOCUMENT. BEFORE HANDLING, READ PRODUCT AND SAFETY DATA SHEETS AND CONTAINER LABELS FOR SAFE USE, PHYSICAL AND HEALTH HAZARD INFORMATION. THE SAFETY DATA SHEET IS AVAILABLE ON THE DOW WEBSITE AT WWW.DOW.COM, OR FROM YOUR DOW SALES APPLICATION ENGINEER, OR DISTRIBUTOR, OR BY CALLING DOW CUSTOMER SERVICE.

NOTICE: No freedom from infringement of any patent owned by Dow or others is to be inferred. Because use conditions and applicable laws may differ from one location to another and may change with time, Customer is responsible for determining whether products and the information in this document are appropriate for Customer's use and for ensuring that Customer's workplace and disposal practices are in compliance with applicable laws and other government enactments. The product shown in this literature may not be available for sale and/or available in all geographies where Dow is represented. The claims made may not have been approved for use in all countries. Dow assumes no obligation or liability for the information in this document. References to "Dow" or the "Company" mean the Dow legal entity selling the products to Customer unless otherwise expressly noted. NO WARRANTIES ARE GIVEN; ALL IMPLIED WARRANTIES OF MERCHANTABILITY OR FITNESS FOR A PARTICULAR PURPOSE ARE EXPRESSLY EXCLUDED.™ Trademark of The Dow Chemical Company ("Dow") or an affiliated company of Dow

© 2022 The Dow Chemical Company. All rights reserved. 2000022325. Form No. 62-2264-01-1022 S2D

